

# HERACLES



# H190 H190T

# H190

## H190 STANDARD VERSION

The H190 is versatile, ideal for construction and farming tasks. Its compact size and robust power make it a reliable choice for various agricultural and construction applications.



# H190T

## H190T TELESCOPIC VERSION

Heracles H190T, designed for enhanced reach capabilities. Its compact yet powerful build ensures efficiency and versatility, making it suitable for a wide range of tasks on farms and construction sites.







Discover the convenience of our hydraulic quick hitch system featured on the H190 series. Designed for easy attachment changes, it enhances operational efficiency. We offer various standard options and customizable configurations. Contact us to explore available options tailored to your specific requirements and region.





Enhance the versatility of your H190 wheel loader with our wide range of attachments. Choose from essential tools like pallet forks for precise material handling, pitchforks for agricultural tasks, stone buckets for robust material handling, and bale grabbers for efficient hay and straw handling. We offer a variety of options to suit your specific needs and maximize productivity in farming and construction applications.

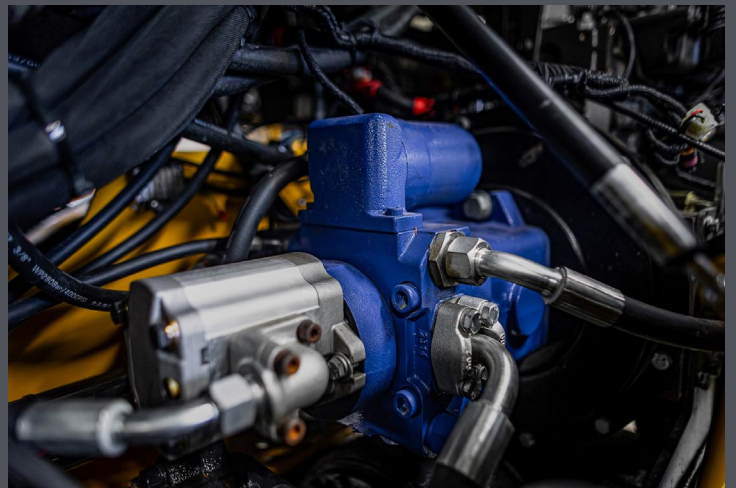






The H190 wheel loader features a hydrostatic transmission from Interpump and incorporates high-quality components from renowned brands, ensuring superior performance, reliability, and durability for all your heavy-duty applications.









TECHNICAL DATA	H190
ENGINE MODEL	YANMAR 3TNV88-BWTY
FUEL TYPE	DIESEL
CYLINDERS	3
DISPLACEMENT CC	1642
EMISSION STANDARDS	EU STAGE V
MAX ENGINE OUTPUT HP	33.5
MAX ENGINE TORQUE NM	107.1
COOLING SYSTEM	WATER
OPERATING VOLTAGE V	12
BATTERY AH	70
OPERATING WEIGHT KG	2000
MAX TIPPING LOAD KG	1300
MAX LIFTING CAPACITY KG	1000
CAB TYPE	CANOPY
TRAVEL SPEED KM/H	0~20
STEERING ANGLE	45
TURN RADIUS IN/OUT MM	1282/2790
STANDARD TIRES	10.0/75-15.3
FUEL TANK CAPACITY L	30
HYDRAULIC OIL TANK CAPACITY L	30
WORKING HYDRAULIC FLOW L/MIN	60
WORKING HYDRAULIC PRESSURE BAR	200
TRANSMISSION TYPE	HYDROSTATIC
TIRES SIZE	10.0/75-15.3   400/60-15.5
HEIGHT	2513
WIDTH	1160   1340



## H190T

YANMAR 3TNV88-BWTY

DIESEL

3

1642

EU STAGE V

33.5

107

WATER

12

70

2500

1500

1200

CANOPY

0~20

45

1124/3030

10.0/75-15.3

30

30

60

200

HYDROSTATIC

10.0/75-15.3 | 400/60-15.5

2513

1160 | 1340





Explore the H190 wheel loader, known for its versatility and popularity in farm and construction applications. With options for various tires and features like a high steering angle and articulated joint, it offers exceptional maneuverability and efficiency. Choose the H190 for your work—it's a reliable choice you won't regret.

For added versatility, the H190 wheel loader is also available in a telescopic version, providing extended reach and enhanced functionality for your lifting and loading needs.

**WEBPAGE:**

[www.heraclesloaders.com](http://www.heraclesloaders.com)

**EMAIL:**

[teddy@heraclesloaders.com](mailto:teddy@heraclesloaders.com)

2024 - V1

# HERACLES